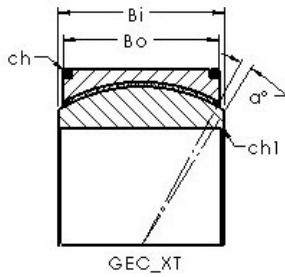
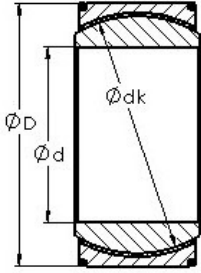




Shandong Chik Bearing Co., Ltd.



AST GEC320XT plain bearings

Bearing No. GEC320XT

Bore Diameter	320 mm
Outer Diameter	440 mm
Bearing Type - double fractured	wide inner
Bore Dia (d)	320.0000
Outer Dia (D)	440.0000
Outer Width (Bo)	135.0000
Inner Width (Bi)	160.0000
Dynamic Load Rating (Cr)	9,230,000
Static Load Rating (Cor)	18,460,000
Max. shaft corner radius, or 45 deg. chamfer (ch1)	1.100
Max. housing corner radius, or 45 deg. chamfer (ch)	3.000
Spherical Diameter (dk or Dk)	380.000
Mis-alignment Angle (a deg.)	4
Weight (g)	78,000.00
Material	Inner ring and outer ring are made from 52100 chrome steel, or equivalent

GEC320XT Bearing 2D drawings and 3D CAD models